



Designer Manufacturer

AGRO EC LCD

Food-safe protective cabinet for computer hardware

Designed to house a computer workstation: flat screen, base unit, keyboard and mouse

Characteristics:

- The body of the cabinet is a single, thermoplastic form, meaning the front and side structure are a single structure;
- Cabinet can be attached to the wall (without supports).
- Panels in 10 mm thick through-coloured composite materials;
- Smooth surface of the cabinet, no sharp corners facilitating cleaning and preventing the build-up of waste/dirt;
- Leaktight cabinet guaranteed by IP 65 protection (closed compartments);
- Connectivity: the cabinet is supplied with:
 - Two standard cable glands (7 to 13 mm) to allow cables to enter the cabinet;
 - A strip of three 220V 10/16A electrical sockets with its own illuminated master switch.

Monitor compartment:

- Front panel protected by a 6 mm thick transparent PMMA screen;
- Opening and closing the compartment using four compression latches in place against a peripheral leaktight seal located in the lip of the frame.

Keyboard compartment:

- Opening and closing the compartment using a 10 mm thick thermoplastic roller-blind and two compression latches in place against a peripheral leaktight seal located in the lip of the frame;
- Sliding white polyethylene keyboard shelf on two polyethylene slides with mechanical stops.

- Advantages:**
- IP 65 leaktightness
 - Reduced footprint
 - Permanent protection

Also available in AGRO EC STANDARD version for cathode-ray screens



AGRO EC LCD
with keyboard shelf, mouse mat
with a SIDE ACCESS HATCH

AGRO EC LCD DIMENSIONS (mm):

External overall	W 600 x D 390 x H 650 mm (front) 750 (rear)
Internal (monitor + Base Unit)	W 580 x D 350 x H 460 mm (front) 560 (rear)
Internal (keyboard)	W 530 x D 280 x H 110 mm
Passing screen	W 520 x H 400 mm



AGRO EC LCD
with open keyboard
compartment
and extended shelf



Closing AGRO EC LCD
using KDL cable



Fixed and mobile workstations

DESCRIPTION OF OPTIONS

The AGRO protection system
for your light computer workstations



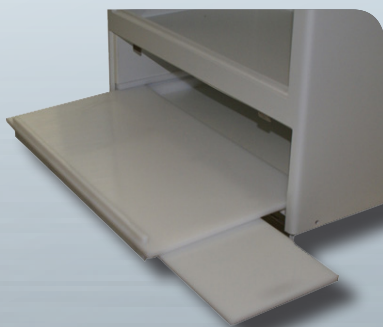
SIDE ACCESS HATCH option

- Thermoplastic hatch to access the computer hardware;
- Fitted with two polyamide hinges and closed by a compression latch.

Ventilation options: VENTILATION INLETS or ECA

ECA
option

- VENTILATION INLETS: natural heat extraction system using protected ventilation inlets;
- ECA: fan protected by a deflector allowing the heat to be evacuated from the cabinet.



MOUSE MAT option

- Polyethylene keyboard shelf;
- Fixed under the keyboard shelf and sliding on the right or left hand side.

KDL option

- A system using opening cable glands, to allow cables to enter the cabinet without having to remove their end pieces;
- The gable glands are in two sections which hold the cables in leaktight seals;
- Generally fitted to the right hand side panel, and ensuring the cabinet remains leaktight.



LEGS option

- Legs in brushed stainless steel (304);
or
- Cabinet can be attached to the wall without supports thanks to its self-supporting structure.

Additional options:

- Additional shelving;
- Locks;
- Pistol grip mount;
- IP 66 protection keyboard and mouse;
- ...



LM REALISATIONS S.A.S

ZA des Platières - 95, chemin des Platières - 38670 Chasse sur Rhône - FRANCE
Tel. 33 (0)4 78 02 84 93 - Fax 33 (0)4 78 02 17 03 - infos@lm-realisations.fr

www.lm-realisations.com

