



Designer Manufacturer

CIT STAINLESS STEEL

Protective cabinets for small and medium format thermal printers

Characteristics:

- Leak-tight cabinet manufactured using class 304 stainless steel of thickness 1,5mm (IP65);
- Cabinet can be wall mounted using an appropriate fixing.
- Smooth outer surface, without angles to facilitate cleaning and avoid the accumulation of waste.
- Sliding shelf fitted to triple extending rails in stainless steel, capable of handling loads of up to 60 kg, allowing the printer to be removed fully;
- Connectivity: two standard cable glands (7 to 13 mm) to allow cables to enter the cabinet.

Front panel:

- Printer controls and labels accessed via the front panel using a 6 mm-thick raisable flap made of PMMA (transparent thermoplastic);
- Opening of the cell on the side or above ;
- The raisable flap is closed tightly against the leaktight seals with a latch.

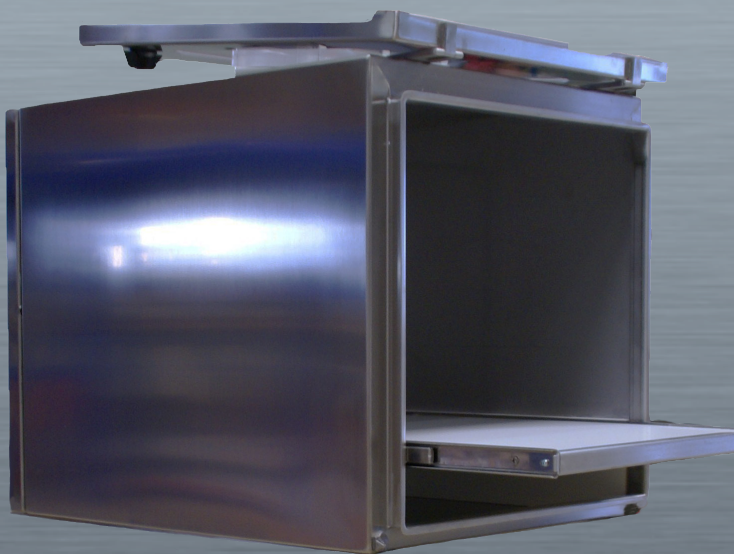
Advantages:

- Ergonomically designed cabinet
- Guaranteed leak-tight seal
- Protection suited to small and medium format thermal printers



CIT STAINLESS STEEL DIMENSIONS (mm)::

Overall external	H 470 x L 460 x P 600 mm
Usable internal	H 375 x L 351 x P 540 mm



CIT Stainless Steel with opening on top and shelf.



CIT Stainless Steel closed with open label slot



REALISATIONS

Fixed and mobile workstations

OVERVIEW OF OPTIONS

*The food grade protection solution
for your small and medium
format laser printers*



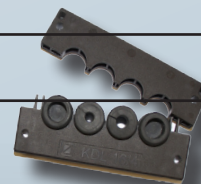
LEGS or WALL MOUNTING option

- Legs in brushed stainless steel (304);
or
- WALL MOUNTING using brushed stainless steel (304) tubing.

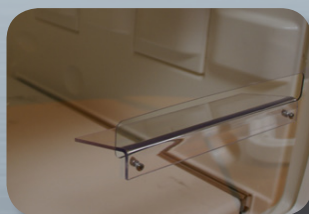


KDL option

- Opening cable gland system designed to allow cables to be connected without having to remove their end pieces;
- The gland glands are in two sections which hold the cables in leaktight seals;
- Generally fitted to the right hand side panel, assuring a leaktight to assure the cabinet remains leaktight.

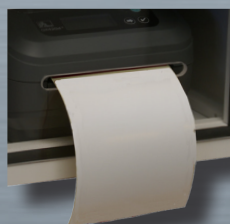


Option
LIGHT +
GUIDE



LABEL SLOT options

- LIGHT + GUIDE: Cut-out from the PMMA front panel with a guide to facilitate label handling;
- LIGHT: Cut-out from the PMMA front panel;
- TAV: Inspection port in unbreakable polycarbonate
Available in two sizes:
 - TAV L 12: W 220 x H 100 mm;
 - TAV L 24: W 220 x H 190 mm.



Option
INSPECTION
PORT

Option
TAV L 12



Additional options:

- Possibility of using 550 mm length slides
- Legs made of brushed stainless steel (304);
- ...

LM REALISATIONS S.A.S

ZI du Bas Pontet - 19, rue Jules Ferry - 69360 Saint Symphorien d'Ozon - FRANCE
Tél. 33 (0)4 78 02 84 93 - Fax 33 (0)4 78 02 17 03 - infos@lm-realisations.fr

www.lm-realisations.com

