



Designer Manufacturer

CIT RANGE



Protective cabinets for small and medium format thermal printers

General characteristics:

- The body of the cabinet is a single, thermoplastic form, meaning the upper and side panels are a single unit;
- The panels are made of a through-stained, 10 mm thick composite material, protecting the cabinet and making it watertight;
- Smooth outer surface, without angles to facilitate cleaning and avoid the accumulation of waste.

SPECIFIC FEATURES OF CIT STANDARD :

- Two hinges enable the top panel of the cabinet to tilt forward to access the printer mechanics and enable label insertion;
- Connectivity: two standard 7 to 13 mm cable glands (on the base) to allow cables to enter the cabinet;
- Printer elevation skids to pull it forwards out of the cabinet.

SPECIFIC FEATURES OF CIT STANDARD & CIT C - Front panel:

- Printer controls and labels accessed via the front panel using a 6 mm-thick raisable flap made of PMMA (transparent thermoplastic);
- The raisable flap is closed tightly against the leaktight seals with a latch.

SPECIFIC FEATURES OF CIT L & CIT L GM:

- Sliding shelf fitted to triple extending rails in stainless steel, capable of handling loads of up to 60 kg, allowing the printer to be removed fully;
- Connectivity: two standard cable glands (7 to 13 mm) to allow cables to enter the cabinet.

Front panel:

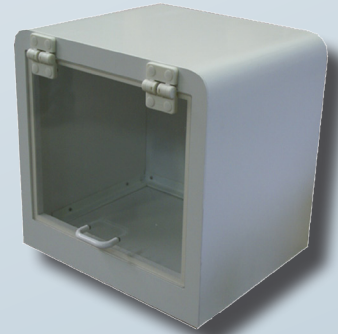
- Printer controls and labels accessed via the front panel using a 6 mm-thick raisable flap made of PMMA (transparent thermoplastic);
- The raisable flap is closed tightly against the leaktight seals with a latch.

Specificities of CIT L GM : Rails in stainless steel triple development of 550 mm

Advantages:

- Ergonomically designed cabinet
- Guaranteed leak-tight seal
- Protection suited to small and medium format thermal printers

CIT C



CIT STANDARD
360° view of removal from cabinet



CIT L with ELEVATION SKIDS option



CIT L GM



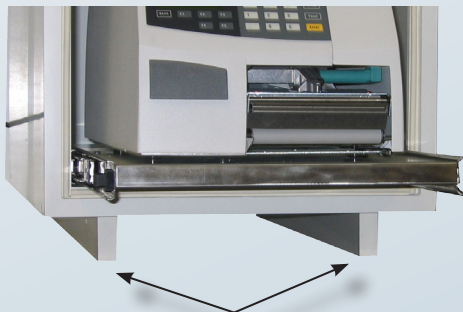
CIT DIMENSIONS (mm):			
CIT STANDARD		CIT C	
Overall external	L 385 x D 600 x H 410 mm	Overall external	L 385 x D 323 x H 360 mm
Usable internal	L 320 x D 550 x H 352 mm	Usable internal	L 320 x D 280 x H 325 mm
Extrication	475 mm	Extrication	475 mm
CIT L		CIT L GM	
Overall external	L 385 x D 600 x H 360 mm	Overall external	L 450 x D 600 x H 450 mm
Usable internal	L 305 x D 570 x H 260 mm	Usable internal	L 340 x D 570 x H 340 mm
Extrication	530 mm	Extrication	550 mm



Fixed and mobile workstations

OVERVIEW OF OPTIONS

*The food grade protection solution
for your small and medium
format laser printers*



ELEVATION SKIDS option

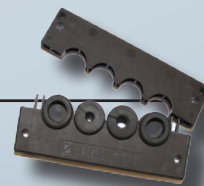


ELEVATION SKIDS option

- Two composite material elevation skids fixed to the base to raise the cabinet;
- Facilitates cleaning under the cabinet and avoids stagnant water.

KDL option

- Opening cable gland system designed to allow cables to be connected without having to remove their end pieces;
- The gable glands are in two sections which hold the cables in leaktight seals;
- Generally fitted to the right hand side panel, assuring a leaktight to assure the cabinet remains leaktight.



LABEL SLOT options

- LIGHT + GUIDE: Cut-out from the PMMA front panel with a guide to facilitate label handling;
- LIGHT: Cut-out from the PMMA front panel;
- TAV: Inspection port in unbreakable polycarbonate
Available in two sizes:
 - TAV L 12: W 220 x H 100 mm - watertight;
 - TAV L 24: W 220 x H 190 mm.

*Option
LIGHT +
GUIDE*



*Option
INSPECTION
PORT*



*Option
TAV L 12*



Additional options:

- For the CIT L GM: Possibility of using 550 mm length slides
- Legs made of brushed stainless steel (304);

LM REALISATIONS S.A.S

ZA des Platières - 95, chemin des Platières - 38670 Chasse sur Rhône - FRANCE
Tel. 33 (0)4 78 02 84 93 - Fax 33 (0)4 78 02 17 03 - infos@lm-realisations.fr

www.lm-realisations.com

