



Designer Manufacturer

CABINET RF EXT GF



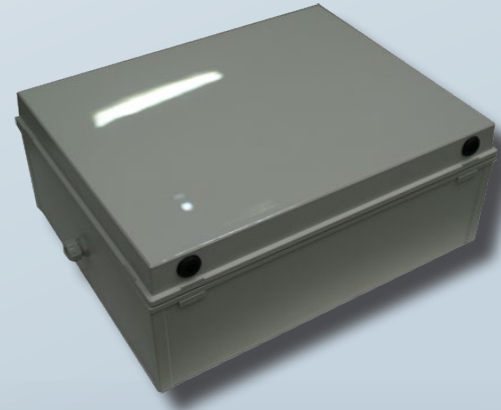
Radio frequency-compatible compartment for outdoor use in extreme cold conditions. (Radio base station).

Characteristics:

- Designed for use at temperatures of between -30 and +50°C;
- 8 mm polycarbonate casing, non-conductive materials (Colour: RAL 7035);
- Cabinet fitted with leaktight seals and a key-operated locking mechanism;
- IP 67 leaktight cabinet with IK 08 shock resistance rating;
- Cabinet supplied with:
 - *White polycarbonate sun shield to provide UV protection;*
 - *Four fixing lugs;*
 - *Two cable glands - one 9-15 mm diameter the other 4-8 mm.*

Internal cabinet fittings:

- Insulation provided by a 20 mm thick layer of STYROFOAM on the sides and base of the cabinets;
- 10 mm thick PVC panel between STYROFOAM and the aluminium casing;
- Aluminium base plate for equipment mounting. Also used for:
 - *Thermostat;*
 - *60W heating element (with protective grille);*
 - *Cable connector terminal block.*



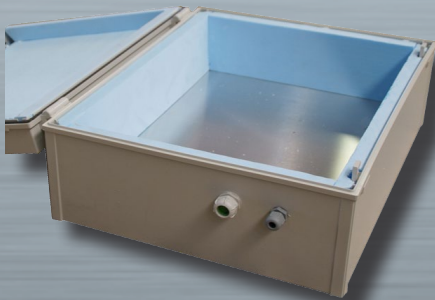
CABINET RF EXT GF (STANDARD) with SUNSHIELD

DIMENSIONS OF THE CABINET RF EXT GF (mm):

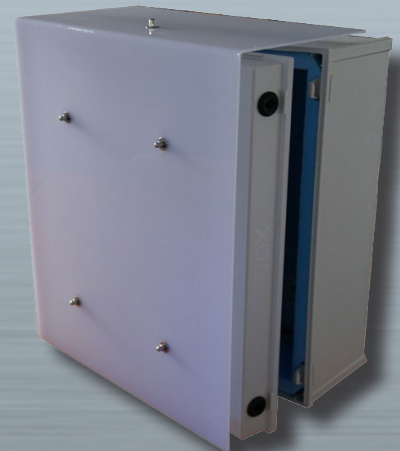
Overall external W 400 x D 210 x H 500 mm

Usable internal W 330 x D 130 x H 440 mm

CABINET RF EXT GF (STANDARD) (with cable glands)



CABINET RF EXT GF with KDL option



EQUIPMENT INTEGRATION option

- Possibility of integrating various component parts (transmitter, power supply, etc.) into the cabinet.

Option KDL

- Specially designed cable gland system - allows cables to be passed into the cabinet without having to remove any connectors;
- The cable gland is in two sections which encircle the cables with leaktight seals;
- Generally fitted to the right hand side panel, assuring a leaktight seal.

