

Fixed and mobile workstations

CABINET RF INT



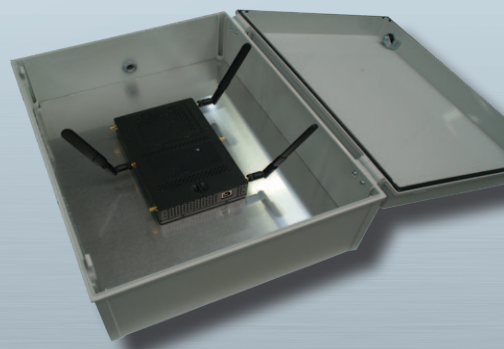
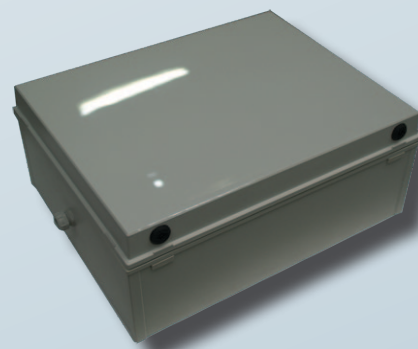
Radio frequency-compatible interior cabinet (Radio Base Station)

Characteristics:

- Designed for use at temperatures of between +5 and +50°C;
- 8 mm polycarbonate casing, non-conductive materials (Colour: RAL 7035);
- Cabinet fitted with leaktight seals and a key-operated locking mechanism;
- IP 67 leaktight cabinet with IK 08 shock resistance rating;
- Cabinet supplied with:
 - Four fixing lugs
 - Two cable glands - one 9-15 mm diameter the other 4-8 mm

Internal fittings:

- Cabinet insulated by a 10 mm PVC panel under the aluminium plate;
- Aluminium base plate for equipment mounting.



DIMENSIONS OF THE CABINET RF INT (mm):

Overall external	W 400 x D 210 x H 500 mm
Usable internal	W 380 x D 170 x H 480 mm

EQUIPMENT INTEGRATION option

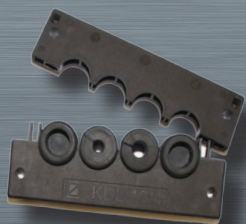
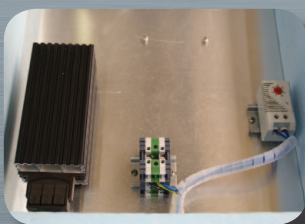
- Possibility of integrating various component parts (transmitter, power supply, etc.) into the cabinet.

Option RCA

- Thermostatically-controlled 30W heater element for CONTROLLED COLD environments (temperatures of between -5 and +5°C).

Option KDL

- Specially designed cable gland system - allows cables to be passed into the cabinet without having to remove the connectors;
- The cable glands are in two sections which hold the cables in place in the leaktight seals;
- Generally fitted to the right hand side panel, assuring a leaktight seal.



LM REALISATIONS S.A.S

ZI du Bas Pontet - 19, rue Jules Ferry - 69360 Saint Symphorien d'Ozon - FRANCE
Tél. 33 (0)4 78 02 84 93 - Fax 33 (0)4 78 02 17 03 - infos@lm-realisations.fr

www.lm-realisations.com

