



Designer Manufacturer

EXTREME COLD

Hardware protection cells dedicated to cold environments (up to -30 ° C)

Features:

- Polycarbonate body cells ;
- Waterproof Cells and smooth surfaces for easy cleaning ;
- Connectors Supplied With Cells

Cold resistance :

- Controlled convector fan heating system ;
- SYTROFOAM insulation layer 20 mm thick on the walls of the boxes ;
- Package closure on seal compression latches

Advantages:

- Optimum physical and thermal protection
- Guaranteed leak-tight seal
- Optimised working space

LOGIPRINT GF

Protective cabinet for thermal printers



Dimensions :

Overall External :
W440 x D700 x H550 mm
Internal Usable :
W360 x D605 x H395 mm

ZAG GF

Protective cabinet for large format thermal printers

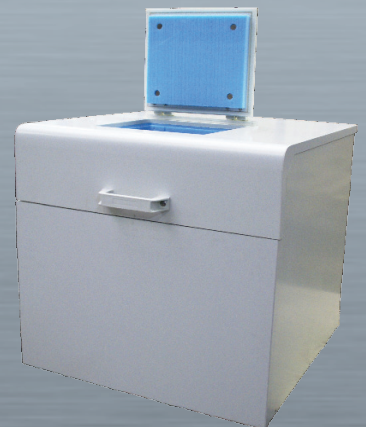


Dimensions :

Overall External :
W 450 x D 760 x H 550 mm
Internal Usable :
W 380 x D 670 x H 500 mm

AL GF

Food grade protective cabinet for laser printer



Dimensions :

Several available models according to the dimensionsof the printer



Postes de travail fixes et mobiles

EC LCD GF

Food-Safe protective cabinet for computer hardware

Dimensions :

External overall :

W 700 x D 380 x H 700 mm

Internal Monitor + Base unit :

W 640 x D 295 x H 480 mm

Internal Keyboard :

W 540 x D 250 x H 110 mm



MU3 GF

Protective cabinet with three compartments to house a complete computer workstation

Dimensions :

External overall :

W 600 x D 600 x H 1070 mm

Internal Monitor + Base unit :

W 545 x D 540 x H 455 mm

Internal Printer :

W 520 x D 540 x H 390 mm

Internal Keyboard :

W 470 x D 390 x H 80 mm



MOBICAR GF

Mobile housing for computer equipment

Dimensions :

External :

Rollbar included : W 560 x D 625 x H 1 430

From floor to worktop level: W 560 x D 625 x H 1040



LOGIRACK LCD GF

Mobile protective cabinet for complete IT Workstations

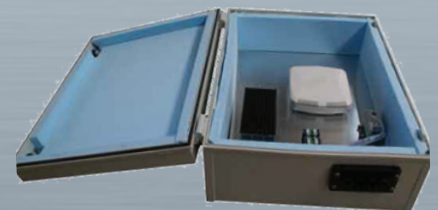
Dimensions :

External :

W 860 x D 760 x H 1020

Internal :

W 780 x D 720 x H 800



COFFRET RF EXT GF

Radio frequency-compatible interior cabinet (Radio Base Station)

Dimensions :

External overall :

W 400 x D 210 x H 500 mm

Usable Internal :

W 340 x D 130 x H 440 mm