



Designer Manufacturer

LOGIRACK LCD



Mobile protective cabinet for complete IT workstations

Characteristics:

- Mechanically welded assembly;
- Structure in 20/10 high resistance steel profiles, to which additional shelves may be added;

Upper section:

- 'Rollbar' in sintered 30mm diameter tubing to which is attached the LCD PROTECTION, also compatible with a PISTOL GRIP MOUNT
- Worktop in steel plate for a mouse and keyboard (integrated mouse mat);
- LCD PROTECTION: protective cover for flat screens Protects LCD monitors from dust, temperature changes, splashes, the cold, etc.

Lower section:

- Encased by composite panels, 10 mm thick, compatible with WiFi and RF transmissions;
- Two doors: one on the front, the other to the rear for access to the computer equipment within;
- Handling: two side-mounted handles;
- Sliding shelf - dimensions W 515 x D 700 mm (dimensions of shelf when extended: 450 mm);
- Fixed intermediate shelf;
- Ambient air & heat extraction and filtration system;
- A strip of five 220V 10/16A electrical sockets with its own illuminated master switch;
- Ground contact: 4 wheels (100 mm diameter), two of which pivot and can be locked, two of which are fixed.

Advantages:

- Ergonomy
- Physically protects computer equipment
- Fully modular internal structure

Also available in an 'extreme cold' version with fitted heating system (down to -30°C)



LOGIRACK LCD DIMENSIONS (mm):

LCD PROTECTION DIMENSIONS (mm):

External	W 860 x D 760 x H 1020	W 500 x D 100 x H 500
Internal	W 780 x D 720 x H 800	W 480 x D 84 x H 480

LOGIRACK LCD
and TAV L24 hatch

LOGIRACK LCD
with computer hardware

LOGIRACK LCD
with printer
on extended shelf
and PISTOL GRIP MOUNT



Fixed and mobile workstations

DESCRIPTION OF OPTIONS...

*The mobile protection solution
for all your computer workstations*

TAV L24 slot



LABEL SLOT option

- TAV: Inspection port in unbreakable polycarbonate. Available in two sizes:
 - TAV L 12: W 220 x H 100 mm;
 - TAV L 24: W 220 x H 190 mm.

LASER SLOT option

- Cut to measure into the front cabinet door;
- Hatch with shutter to give access to A4 format print jobs.



LASER SLOT

PISTOL GRIP MOUNT support

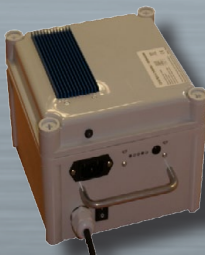
- Attached to the sintered tube 'rollbar';
- Or the worktop;
- Compatible with standard pistol grips.



PISTOL GRIP MOUNT

ENERGY CABINET option

- With AGM (acid-free) and LITHIUM (Li) IRON (Fe) Batteries;
- Single, perfectly insulated and ventilated housing;
- Houses batteries and all peripheral material (converters, chargers, etc.);
- Provides a supply for multiple consumer units (PC, printer, terminal, screen, etc.) thanks to its multi-voltage outputs (5 to 24V DC and/or 230V AC).



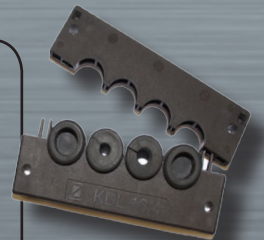
Battery
LITHIUM IRON



AGM Battery

Additional options:

- Stainless steel version available;
- KDL: cable gland system;
- Monitor mounting plate;
- Warning lights and remote voltage display;
- Additional fixed or sliding shelf;
- Label tray;
- Internal layout to measure;
- etc.



KDL